



PRÉSENT

# Spillglop® 250

TECHNOLOGY WHICH ALLOW YOU TO FINANCE YOUR VESSELS  
WITH GENERATED SAVING

FUNCTIONAL WITH 4 CREWS MEMBERS

ALL CLEANING OPERATIONS ARE MANAGED FROM WHEELHOUSE



**PROVEN EFFICIENCY**  
UP TO 100% OF OIL COLLECTED

[WWW.ECOCEANE.COM](http://WWW.ECOCEANE.COM)

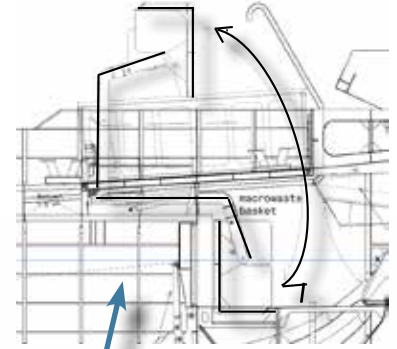
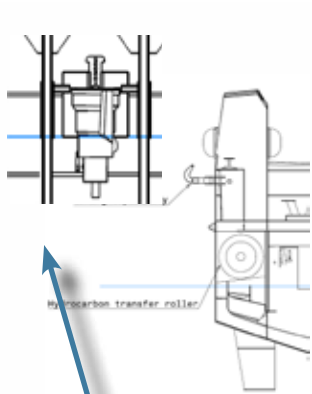
WORKBOATS AND OIL SPILL  
CLEANING VESSELS

# Manage from wheelhouse

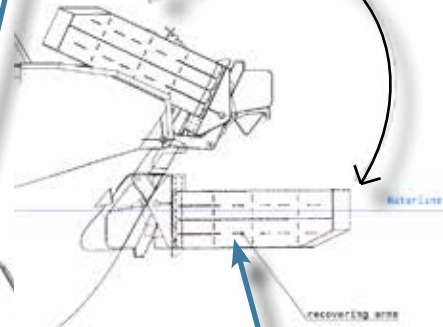
Widing and unwiding of oil transfert hose and oil pump

## OIL SPILL ELEMENT MANAGEMENT

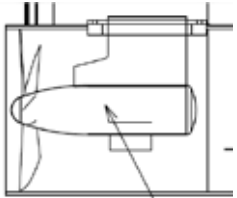
Basket emptying



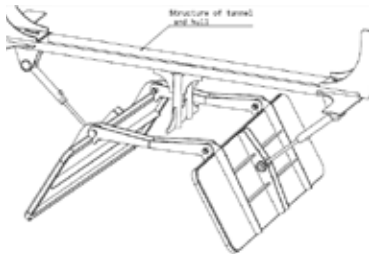
Arms deployment



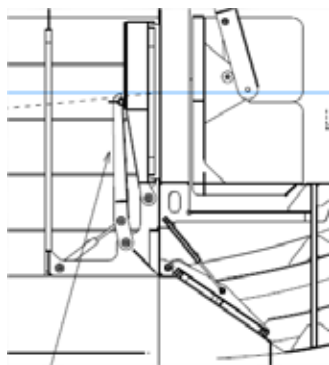
Cleaning propeller



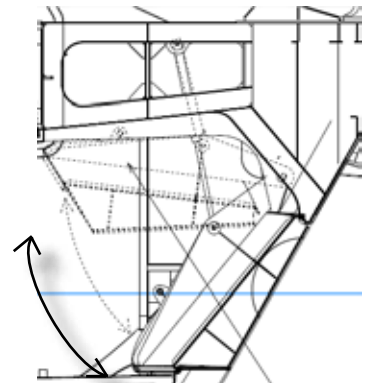
Venturi doors



Tunnel and oil tank doors



Front door opening



**THIS AUTOMATION ALLOW TO LOWER NUMBER OF CREW.  
ONLY 4 CREW MEMBERS ARE NECESSARY TO ACHIEVE OIL SPILL CLEANING OPERATION**

Prooven video on our youtube channel : <https://goo.gl/IQoMT9>



Ohmsett's test movies



sea trials movies



# FINANCIAL ANALYSIS

## SPILLGLOP 250 : a profitable purchase

With its crew member optimized to 4 people, SG 250 allow to make huge savings on the fonctionnal cost. We propose you to compare the one of SG 250 to the annual cost of your equipments.

### SG 250 (for a 24h stanby : 2 crew team are necessary)

Annual operationnal cost in €		(in France)		
		Q	Px	Total (€)
Maintenance €/an	unit	1	37 956	37 956
Diesel oil (L/h) (1800 h/an)	Liters	253 206	0,75	189 905
Crew 24/24 i.e. 2 teams of 4 crews				
Captain	Pers	2	50 400	100 800
Mechanical	Pers	2	47 700	95 400
Seamen	Pers	4	36 000	144 000
<b>TOTAL</b>				<b>568 061</b>

Oil cleaning equipment extra cost	included
-----------------------------------	----------

Pure oil rate of collection (without creating emulsion) m <sup>3</sup> /h	120
---	-----

### Compare your vessel with our equipment

Annual operationnal cost in €		Q	Px	Total
Maintenance €/an	unit			
Diesel oil(L/h) (1800 h/an)	Liters			
Crew 24/24 i.e. 2 teams of X crews				
Captain	Pers			
Mechanical	Pers			
Seamen	Pers			
<b>TOTAL</b>				

Oil cleaning equipment extra cost	
-----------------------------------	--

Pure oil rate of collection (without creating emulsion) m <sup>3</sup> /h	
---	--

If your annual operationnal cost is more expensive or equal to SG 250, including its amortization then the SG 250 self-finance itself through savings on operationnal costs.

## SPILLGLOP is an offshore oil spill range of vessels



	SG 160	SG 200	SG 250	SG 460
Construction material	Aluminum	Steel	Aluminum/Steel	Steel/Aluminium
Length overall	16 m	20 m	25 m	46 m
Beam	6 m	7 m	7 m	10 m
Draft	2,30 m	3,50 m	3,00 m / 3,50 m	3,50 m
Light weight	35 T	70 T	80 T / 125 T	220 T
Payload	15 T	30 T	30 T	50 T
Cleaned surface per hour	35 000 m <sup>2</sup>	45 000 m <sup>2</sup>	50 000 m <sup>2</sup>	75 000 m <sup>2</sup>
Hydrocarbon storage	30 m <sup>3</sup>	40 m <sup>3</sup>	120 m <sup>3</sup> / 80 m <sup>3</sup>	180 m <sup>3</sup>
Hydrocarbon transfer	120 m <sup>3</sup> /h	140 m <sup>3</sup> /h	140 m <sup>3</sup> /h	140 m <sup>3</sup> /h
Absorbant or dispersant storage	5 m <sup>3</sup>	5 m <sup>3</sup>	30 m <sup>3</sup>	on demande
Working speed	3.5 Kt up to Beaufort 5/6	4 Kt up to Beaufort 6/7	4 Kt up to Beaufort 6/7	4 Kt up to Beaufort 6/7
Cruising speed	10 nds	10 nds	13 nds / 12 nds	15 nds
Crew (min)	3	4	4	6
Passenger transport	12	12	12	26
Hydraulic crane	10 T/m	10 T/m	10 T/m + 30 t/m	10 T/m + 30 t/m
Engine unit	2 x 350 CV	2 x 750 CV	2 x 750 CV / 2 x 1 000 CV	2 x 1 800 CV
Generators	25 + 25 kVA	37 + 40 kVA	37 + 37 kVA	95 + 124 + 125 kVA
Navigation notations (IACS)	Unrestricted	Unrestricted	Unrestricted	Unrestricted
Bollard pull	7 T	10 T	10 T / 15 T	15 T
Fire-fighting	option	option	option	option
Solar panels, VHF, echosounder	yes	yes	yes	yes
Oil spill detection radar	option	option	option	option
Air conditioning/heating	yes	yes	yes	yes
Hazardous environment - protected area	yes	yes	yes	yes
BV Classification Oil Recovery Ship	option	option	option	option
Keel cooling	option	option	option	option
Floating booms reel	option	option	option	option
Rear deck platform	option	option	option	option
Fire deluge system			option	

Non contractual data.

### Head Office



35 Quai d'Anjou - 75004 Paris - France  
Tel : +33 1 53 10 39 10 - Fax : +33 1 53 10 39 28



### Chipyard

ZA de Kerpallud - 22500 Paimpol - France  
Tel : +33 2 96 22 07 03 - Fax : +33 2 96 20 54 43